

SWITZERLAND

Phone: +41 (0) 43 931 61 68
 AFTN: LSSAYOYX
 Email: aip@skyguide.ch



AIP SUP: 005/2024

Effective Date: 08-AUG-2024

Publication Date: 08-AUG-2024

AIP Services
 P.O. Box
 CH-8602 Wangen bei Dübendorf
 Switzerland

LSGG Temporary crane in AOC - Type A - RWY 22

LSGG - Aerodrome Obstacle Chart - Type A - RWY 22

Following AIP pages suspended during validity of this SUP:

- LSGG AD 2.24.4 - 3
- LSGG AD 2.10, AOC 22 (1) - (16)

LSGG AD 2.10 AERODROME OBSTACLES

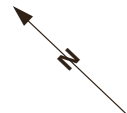
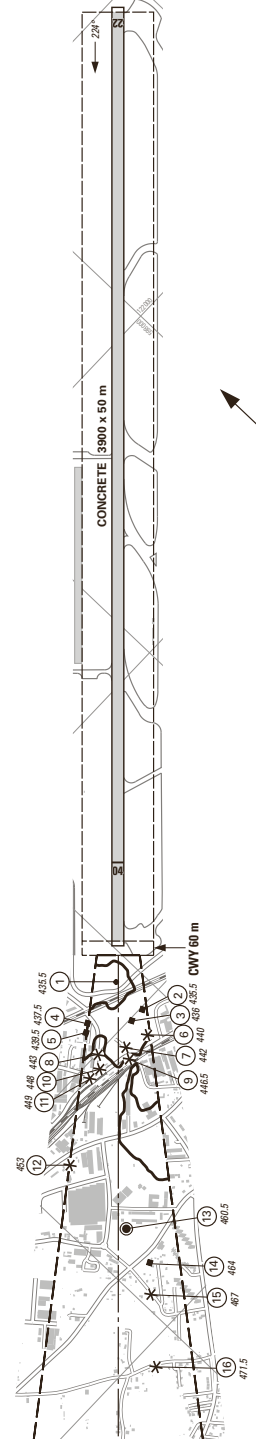
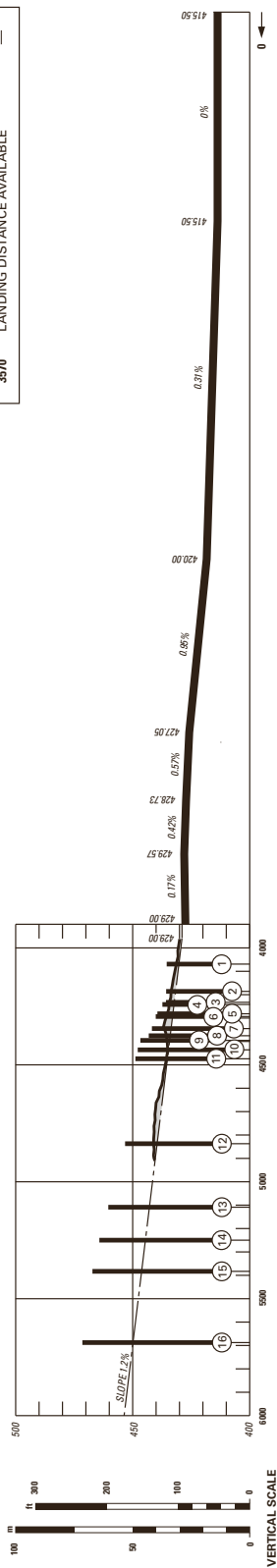
In approach/TKOF areas			In circling area and at aerodrome			
1			2			3
RWY/Area affected	Obstacle type Elevation Markings/LGT	Co-ordinates	Obstacle type Elevation Markings/LGT	Co-ordinates	RMK	
a	b	c	a	b	c	
	ft			ft		
AOC 22 (1)	Localizer 1429	46 13 29 N 006 05 22 E	Building LGTD 1523	46 14 11 N 006 06 58 E	A0051/02	
AOC 22 (2)	Building 1430	46 13 23 N 006 05 21 E	Antenna LGTD 1565	46 13 49 N 006 07 08 E		
AOC 22 (3)	Building 1430	46 13 24 N 006 05 18 E	Building marked/LGTD 1539	46 14 03 N 006 05 04 E		
AOC 22 (4)	Building 1435	46 13 28 N 006 05 12 E	Tree/trees 1493	46 15 36 N 006 08 22 E		
AOC 22 (5)	Building 1442	46 13 27 N 006 05 10 E	Antenna marked/LGTD 1453	46 13 33 N 006 05 14 E	A0438/13	
AOC 22 (6)	Tree/Trees 1445	46 13 21 N 006 05 19 E	Antenna marked/LGTD 1575	46 13 19 N 006 07 19 E		
AOC 22 (7)	Tree/Trees 1450	46 13 22 N 006 05 14 E	Antenna marked/LGTD 1428	46 14 27 N 006 06 24 E	A0437/13	
AOC 22 (8)	Tree/Trees 1454	46 13 24 N 006 05 09 E	Pole LGTD 1398	46 14 43 N 006 07 27 E	A0108/02	
AOC 22 (9)	Tree/Trees 1466	46 13 20 N 006 05 13 E	Pole LGTD 1507	46 13 26 N 006 05 49 E	A0054/09	
AOC 22 (10)	Tree/Trees 1470	46 13 22 N 006 05 07 E	Antenna LGTD 1490	46 14 15 N 006 06 59 E	A0124/12	
AOC 22 (11)	Tree/Trees 1473	46 13 22 N 006 05 05 E	Crane/Cranes marked/LGTD 1586	46 12 58 N 006 07 14 E	B0431/08	

In approach/TKOF areas				In circling area and at aerodrome			
1				2			3
RWY/Area affected	Obstacle type Elevation Markings/LGT	Co-ordinates		Obstacle type Elevation Markings/LGT	Co-ordinates		RMK
a	b		c	a		b	c
		ft			ft		
AOC 22 (12)	Tree/Trees	1487	46 13 16 N 006 05 50 E	Crane/Cranes marked/LGTD	1497	46 13 49 N 006 06 26 E	A0210/08
AOC 22 (13) (temporary)	Crane	1511	46 13 05 N 006 04 49 E	Pole marked	1369	46 15 02 N 006 07 36 E	A0364/09
AOC 22 (14)	Building	1523	46 12 59 N 006 04 47 E	Antenna marked/LGTD	1470	46 13 50 N 006 05 44 E	A0251/02
AOC 22 (15)	Tree/Trees	1533	46 12 56 N 006 04 43 E	Antenna marked/LGTD	1391	46 15 00 N 006 07 48 E	A0436/13
AOC 22 (16)	Tree/Trees	1547	46 12 48 N 006 04 33 E	Antenna LGTD	1523	46 14 00 N 006 07 09 E	A0329/02

VAR 2° E (2018.5)

RWY: 22

RWY 04	DECLARED DISTANCES in m	RWY 22
—	TAKE-OFF RUN AVAILABLE	3900
—	TAKE-OFF DISTANCE AVAILABLE	3860
—	ACCELERATE STOP DISTANCE AVAILABLE	3900
—	LANDING DISTANCE AVAILABLE	—



No.	DATE	AMDT RECORD ENTERED BY

LEGEND

①	Identification number	OBST	ELEV/m m
*	Tree, shrub	AD	ELEV/m m
⊙	Pole, tower, spire, antenna, crane, etc.		
■	Building, large structure		
⌒	Terrain penetrating obstacle plane		

ORDER OF ACCURACY ACCORDING TO ICAO REQUIREMENTS

© swisstopo

CDR TEMPO OBST Nr. 13 replaciert (SUP WEF 08AU02024)

THIS PAGE INTENTIONALLY LEFT BLANK